



MONTHLY MEMBERSHIP PROGRESS REPORT

District 5M 9

Results as of: 09/30/2018

GMT: MICHAEL MOLENDIA

LOCATION MINNESOTA

GMT CA

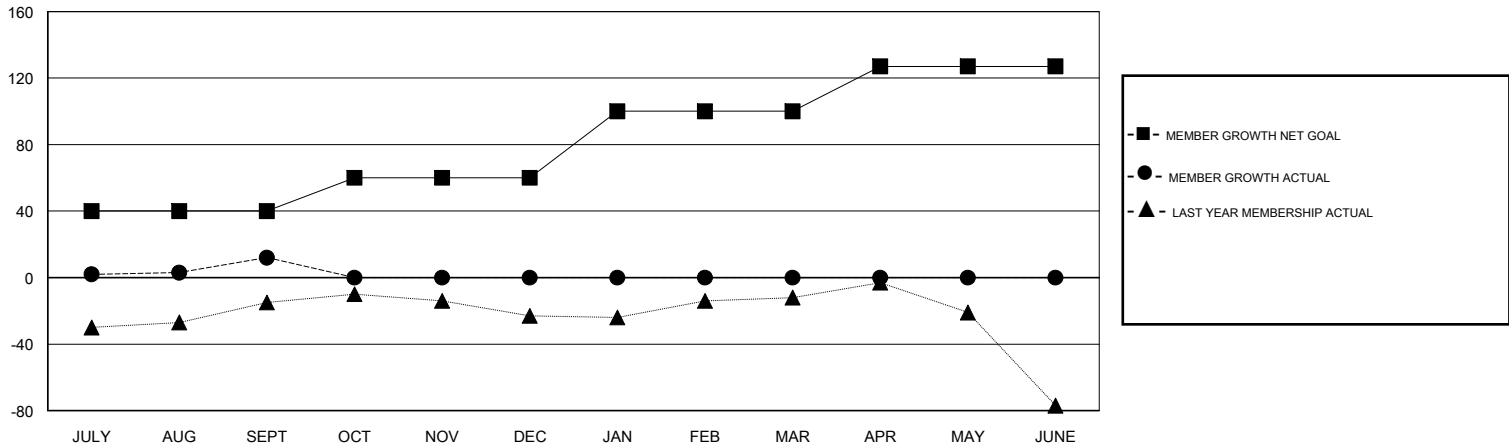
Clubs			
RESULTS FOR 2018-2019			
QUARTER	NEW CLUB GOAL	NEW CLUBS	DROPPED CLUBS
JULY/AUG/SEPT	0	0	0
OCT/NOV/DEC	0	0	0
JAN/FEB/MAR	0	0	0
APR/MAY/JUNE	0	0	0

Members			
RESULTS FOR 2018-2019			
QUARTER	MEMBER GROWTH NET GOAL	MEMBER GROWTH ACTUAL	DROPPED MEMBERS ACTUAL (including transfers)
JULY/AUG/SEPT	40	71	46
OCT/NOV/DEC	20	0	0
JAN/FEB/MAR	40	0	0
APR/MAY/JUNE	27	0	0

GOALS AND ACTUAL NEW CLUBS CUMULATIVE



GOALS AND ACTUAL MEMBERS CUMULATIVE



DROPPED CLUBS: 0	28 CLUBS OF 67 ADDED 1 OR MORE NEW MEMBERS	<u>GENDER DISTRIBUTION</u>	
DROPPED MEMBERS		MALE	1,398 (62.78%)
DECEASED	7	FEMALE	829 (37.22%)
CLUB CANCELLED	0	Women Percentage Fiscal Year Goal: 0%	
OTHER	39	TOTAL FAMILY UNIT MEMBERS	
TOTAL	46	725	
CLICK HERE FOR CUMULATIVE MEMBERSHIP DATA		FAMILY MEMBERS PAYING HALF DUES	
		366	